



2AS Containers

Containers in HDPE, high-density polyethylene, recyclable, combined to the bilateral collection system Two Automatic System

CONTAINERS IN HDPE



CONTAINER MADE OF RECYCLED PLASTIC

HDPE containers by ESA represent a perfect example of circular economy. The plastic used for their realization in fact comes from separate collection itself. Each container can be recycled at the end of its life cycle, thus obtaining a substantial reduction of waste, a simultaneous recycling of the material and a lower overall environmental impact.



SUITABLE FOR RECYCLING



FEATURES OF HDPE CONTAINERS

CONTAINERS	STANDARD SERIES VOLUMES			SLIM SERIES VOLUMES			
		2500l	3000l	3750l	1750l	2100l	2700l
Width (mm)		1265	1465	1765	1265	1465	1765
Height (mm)		1840	1840	1840	1840	1840	1840
Depth (mm)		1614	1614	1614	1214	1214	1214
Weight (kg)		220	250	285	200	220	250
Load [kg]	(kg)	1000	1200	1500	700	850	1100
Loading point height (mm)		1250	1250	1250	1250	1250	1250
Loading point dimensions							
Porthole (mm)		Ø200	Ø200	Ø200	Ø200	Ø200	Ø200
Drum (mm)		340x400	540x400	840x400	340x400	540x400	840x400
Paper/Cardboard (mm)		-	500x245	800x245	-	500x245	800x245
Cover/Drawer (l)		20/40	20/40	20/40	20/40	20/40	20/40
Loading point shape	-	Porthole	Porthole	Porthole	Porthole	Porthole	Porthole
		Drum	Drum	Drum	Drum	Drum	Drum
		Cover	Loophole	Loophole	Cover	Loophole	Loophole
		Drawe	Cover	Cover	Drawe	Cover	Cover
		Drawe	Drawe		Drawe	Drawe	

ESA's high-density polyethylene (HDPE) containers show an original design that can adapt to every urban context. Printed by rotational molding using recycled polyethylene, they are classified as ECO-COMPATIBLE and therefore completely fall within the regulations of GREEN purchases. Bascule, leverages and drum skid are in galvanized steel to give greater stability to the container. They are CE certified in order to give maximum reliability and tranquility to operators.



HDPE containers also have considerable advantages from an ergonomic point of view, both for professional operators, who can enjoy greater safety during the collection service, and for final users, who are guaranteed extreme ease of delivery. Thanks to the presence of accessories and opening systems designed to facilitate the access, HDPE containers can be easily used by people with disabilities.

HDPE CONTAINERS QUALITIES



LIGHT



RECYCLABLE



RESISTANT TO CHEMICAL AGENTS



HIGH SHOCK RESISTANT



NO PAINT NEEDED



30% OF NOISE REDUCTION

METAL CONTAINERS



ESA
METALLIC CONTAINERS

The supporting structure is made of steel, while the containment tank is designed and produced in light alloy; the continuous wire industrial welding process guarantees high water tightness and a long-life cycle.

The metallic containers have been designed for vertical loading, thus allowing a better loading and emptying speed; this also ensures an easy taking of the containers.

The loading points of all the ESA containers are customizable in colour, size and shape.

Stationary metallic containers by ESA are designed with a modern, non-conventional design. The surfaces are treated with hot galvanization and can be painted with polyester powder to guarantee greater resistance to chemical and atmospheric agents.



Metal containers have a long tradition of use and are still the most common type on the market.

METALLIC CONTAINERS QUALITIES



WATERTIGHT



EXTREMELY RESISTANT



INDUSTRIAL WELDING



POSSIBILITY OF PAINTING WITH
SPECIAL RAL COLOUR (optional)



MODERN,
NON-CONVENTIONAL DESIGN



TECHNOLOGY

UHF SYSTEM AND GPS POSITION

Applied electronics guarantees great advantages for both users and manager. Users find a very practical system, they can benefit from a saving given by the punctual pricing managed by a personal and identification code that measures the disposals. The manager can optimize and improve its collection service, process transfer and operation data, remote control and manage a resistant and robust instrumentation. Finally, the Public Authority can encourage virtuous behaviors, spread separate waste collection and contain collection costs.

Data management always takes place in compliance with the rules protecting privacy and each device is connected via gsm / gprs to a secure SQL platform, with access protected by login and password. In terms of quality, the electronics box is in injection-molded polycarbonate and is IP67 watertight according to the EN60529 standard. The electronic board is designed with modular logic, is EMC certified for electromagnetic compatibility UNI CEI 7001 and guarantees total resistance to severe weather conditions and wash with standard high-pressure equipment. This solution allows a high quality of the material and allows the Manager to have total control both of the container and of all the operations performed on it. All this translates into a considerable economic benefit that can be found by the Client.



Our "standard" devices guarantee the following services:

- full container warning
- temporary delivery inhibition
- block notice
- sending operating



KINSHOFER HOOKING SYSTEM

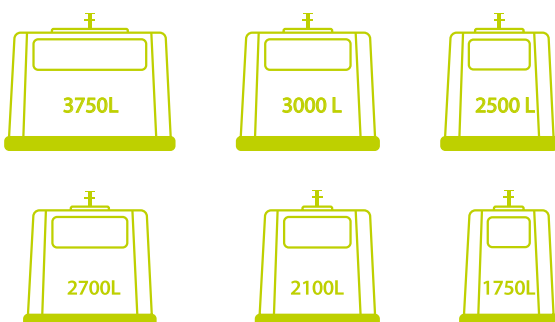
BILATERAL DELIVERY SYSTEM

ESA containers fit to the bilateral collection system 2AS. The hooking system is universal and perfectly adapts to different crane types. Combined system 2AS guarantees the best performance in terms of time and efficiency.

Bascule, leverages and drum skid are in galvanized steel to give greater stability to the container.

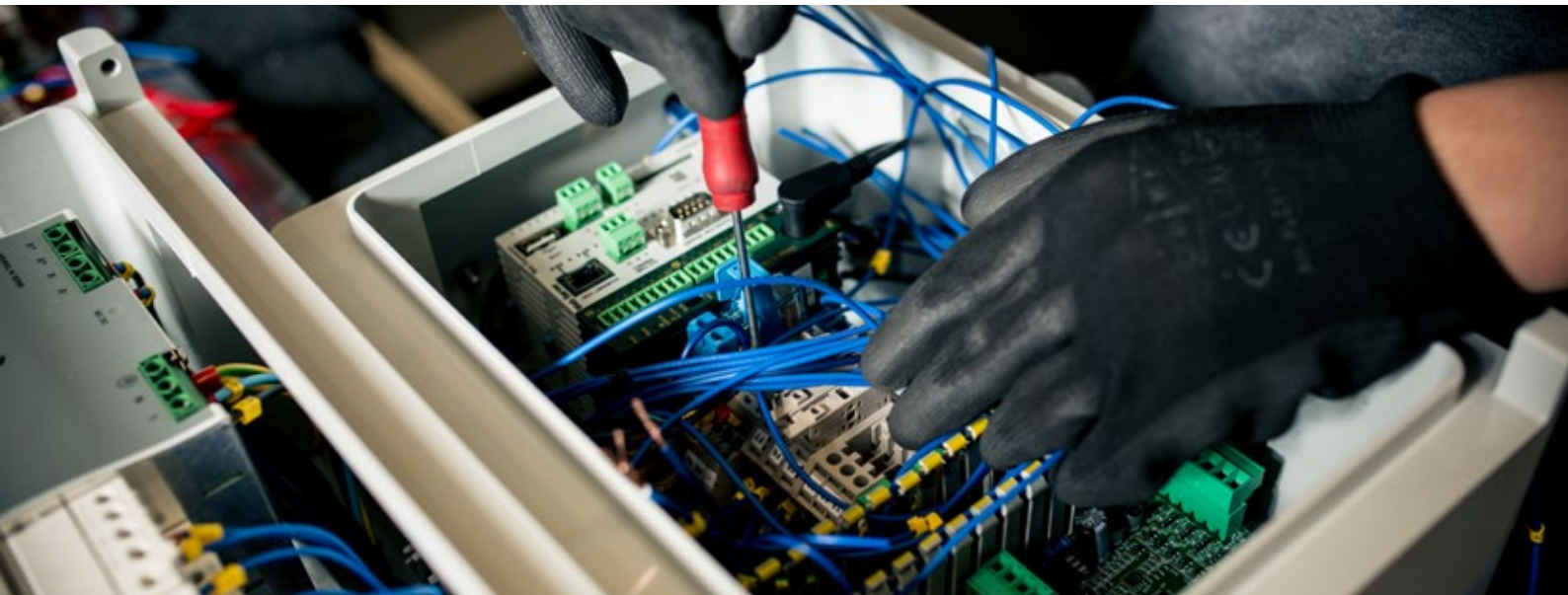


SIX VOLUMES TO COVER MARKET DEMANDS

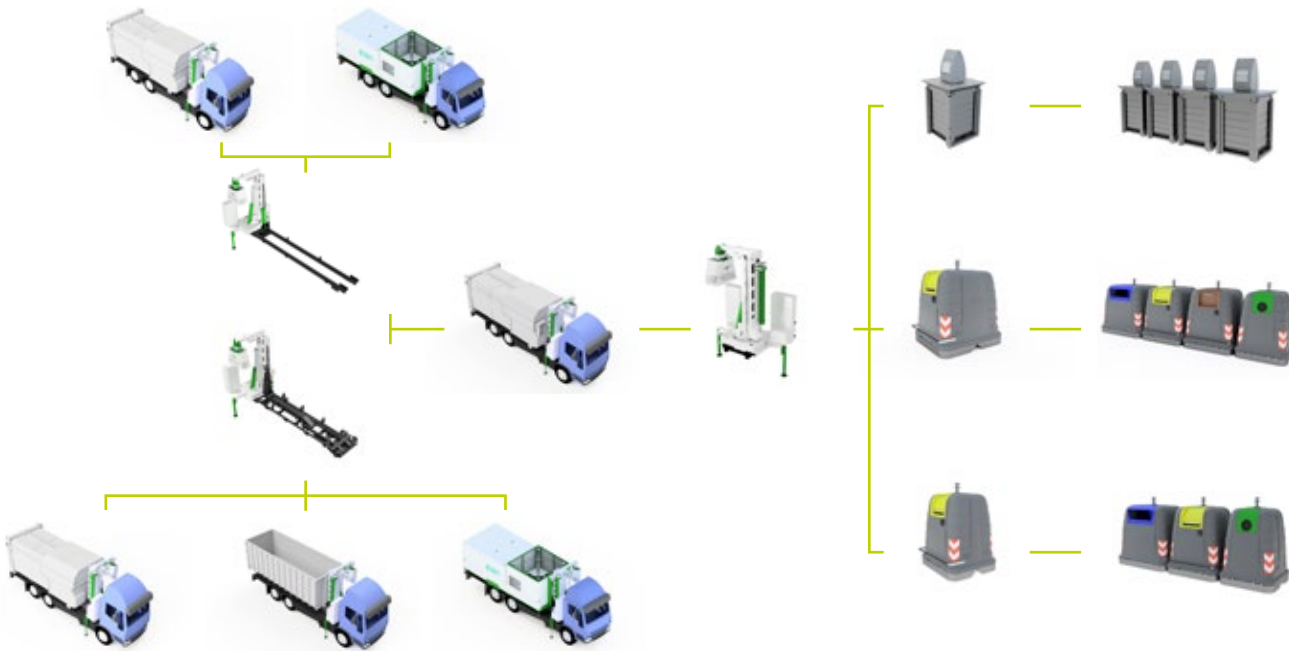


The quality of ESA's solutions guarantees a high and long-lasting reliability. The equipment has been designed and tested professionally and scrupulously and its useful life today is particularly long; therefore no significant maintenance is foreseen, except for those ordinary and regular, in order to keep the efficiency and effectiveness of the equipment constant over time. Particular attention is paid to personnel who always work with competence and experience. The warranty on the equipment is 12 months.

For what concerns the containers, especially those in HDPE, the high impact resistance guarantees a long useful life; in case of damage, due to the basic principle of the high recyclability of the material, the renewal of the external shell is simple, quick and economical. Furthermore, the electronic access control system is correctly positioned and sufficiently protected in order to minimize the risk of wear and damage. In any case ESA's after-sales service guarantees professional competence, territorial proximity to the final customer, rapid interventions and allows the value of the goods to be preserved over time.



2AS - THE MODULAR SYSTEM



2AS (TWO AUTOMATIC SYSTEM) - BILATERAL COLLECTION SYSTEM

The combination of the bilateral robotized arm with the roll-off compactor or container washer makes 2AS the most complete solution on the market. Easy to install on any type of vehicle, 2AS allows the collection of above-ground or underground containers.



69" COMPLETE OPERATING CYCLE



SINGLE-MAN-OPERATED

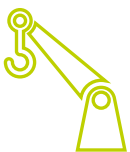


PAYLOAD IN STANDARD CONFIGURATION 8.000 Kg *

* with 3 axles, 26 Tons and roll-on-off compactor

1

ROBOTIZED EQUIPMENT



Robotized equipment for lifting and hooking of 2AS containers with automated system and control devices for management by single operator and bilateral hooking system.

LASER GUIDE



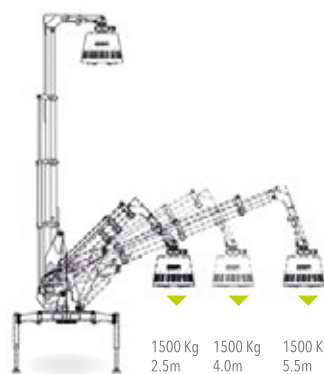
CONTAINER RECOGNITION SYSTEM UHF



SELF-LEVELLING



LOAD CHART



CHARACTERISTICS

7 CAMERAS



INTEGRATED WEIGHING SYSTEM



SUITABLE FOR EVERY HOOKING SYSTEM



2

COMPACTOR - CONTAINER WASHER



Roll-off type equipment suitable for the installation of a 20/22 m³ compactor or open containers of different types. CE system certified by the manufacturer, complying with technical standards and directives:

- 2006/42 / CE - machinery directive
- 2014/30 / EU - directive on electromagnetic compatibility
- 2014/35 / EU - "low voltage" directive
- ISO 4306 2010 - lifting devices

INTEGRATED SYSTEM FOR WASHING CONTAINERS



FEATURES

ROLL-OFF SYSTEM



3

VEHICLE



A flexible solution given the possibility of installation on the most used chassis of the market.

FEATURES

EASY TO SET UP FOR MORE CHASSIS



4

CONTAINERS

The system is suitable to collect different types of above-ground and underground containers

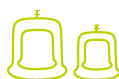


FEATURES

HDPE STANDARD CONTAINERS OF 2500, 3000, 3750 L
HDPE SLIM CONTAINERS OF 2700, 2100, 1750 L



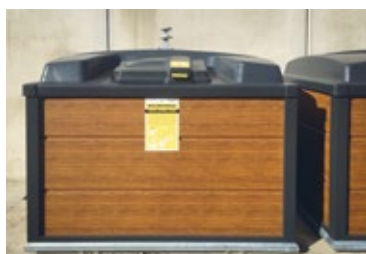
FIBERGLASS BELLS OF 2200, 3600 L



METAL CONTAINERS OF 2500, 3000, 3750 L



ABOVE-GROUND AND UNDERGROUND SYSTEMS





Ecologia Soluzione Ambiente S.p.A.
Via Vittorio Veneto 2-2/A
42021-Bibbiano, Reggio Emilia
Italy



Tel +39 0522 88 44 11
Fax +39 0522 88 44 01



ecologia@ecologia.re.it



www.ecologia.re.it



FOLLOW US

